



The New York State Clinical Education Initiative
Hepatitis C & Drug User Health Center of Excellence

brings you

Buprenorphine Initiation for Beginners

focus on Long-acting Injectables

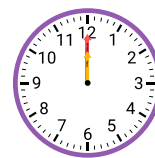
Learning Objectives

Featuring
Zina Huxley-Reicher, MD

1. Describe the steps for buprenorphine initiation from a provider and patient perspective.
2. Identify best practices for buprenorphine initiation among an adult patient population in the primary care setting.
3. List common barriers to buprenorphine initiation and identify solutions to those barriers.
4. Describe low dose buprenorphine initiation and other emerging initiation approaches.



**Free CME, CNE
& CPE Credit!**



Friday, June 27th
12PM - 1PM

The final session of our Buprenorphine series!

CME Accreditation/Certification Statement:

The University of Rochester School of Medicine and Dentistry is accredited by the Accreditation Council for Continuing Medical Education (ACCME) to provide continuing medical education for physicians. The University of Rochester School of Medicine and Dentistry designates this live activity for a maximum of 1.0 AMA PRA Category 1 Credits™. Physicians should claim only the credit commensurate with the extent of their participation in the activity.

CNE Statement:

The University of Rochester Center for Nursing Professional Development is accredited with distinction as a provider of nursing continuing professional development by the American Nurses Credentialing Center's Commission on Accreditation. This offering provides 1 nursing contact hours.

CPE Statement:

Continuing Education Information



The University at Buffalo School of Pharmacy and Pharmaceutical Sciences is accredited by the Accreditation Council for Pharmacy Education as a provider of continuing pharmacy education. "Buprenorphine Initiation for Beginners", a knowledge-based activity, has been assigned ACPE# 0044-9999-23-034-L08-P, and will award 1 contact hour (0.1 ceu.) of live continuing pharmacy education credit. No partial credit will be awarded.